

Kurzweil/Soundtower Inc.

Kurzweil Music Systems and Soundtower Inc. are pleased to announce the latest updates for the amazing PC3 synthesizer/controller keyboard and the companion SoundEditor software.

By updating your PC3 system software to V1.32 or higher and downloading the latest PC3 Editor V1.20, you will immediately enjoy access to a number of significant new features that will increase your understanding of this feature rich instrument and allow you to better keep track of any custom programming you have created.

This latest update allows the you to access a “digital notepad” to document assignment of the various controllers and sliders found on the PC3 on a program by program basis. This information may be conveniently entered at various stages of the editing process and can be recalled on the PC3 screen using the INFO button as a cue sheet during performance.

Additionally, information pages within the software allow the you to peer into the genetics of just what makes up the sound that is being used. All the key elements that make up a Program may be reviewed to have a better understanding of what was used to create your favorite sounds. Also, the usage of the individual Programs in the various Setups may be confirmed to assure that no Program that you need is accidentally overwritten. This same ability to confirm usage also applies to the many algorithm structures and built in effects settings.

This latest update is the inclusion of a fully featured librarian. Here you can store an unlimited number of Programs and Setups and organize them in a way that makes best use of the PC3 for your needs. Additionally, a new feature for visually impaired uses have been provided offering spoken cues of all the parameters of the editor.

Please take the time to download and install the latest PC3 system software and to also be sure to download and install the latest SoundEditor software. Please review the documentation for the SoundEditor to be sure you have every available tool at your fingertips and that you are getting the best out of your Kurzweil PC3.

Enjoy!!

The Teams at Kurzweil Music Systems and Soundtower Inc.

System 1.32 and higher

(<http://www.kurzweilmusicsystems.com/Product.php?product=181&tab=downloads>)

Editor 1.2

<http://www.soundtower.com/pc3/download.htm>

The Update...

Let's explore the new features of this latest update. After installation of the latest PC3 system software and starting the PC3 editor, you will be presented with the standard first page.

Please note - this manual has been prepared using the Macintosh version of the Editor/Librarian. The PC version looks very similar and is functionally identical. The usual differences between Mac and PC versions in modifier keys for keyboard shortcuts will apply.



You will notice two additions on the top right hand corner of this window.

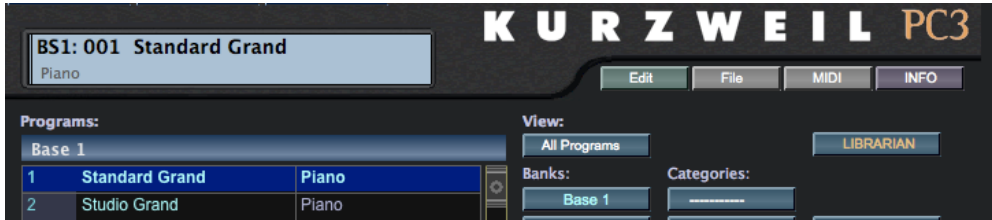


There are two new buttons - INFO and LIBRARIAN.

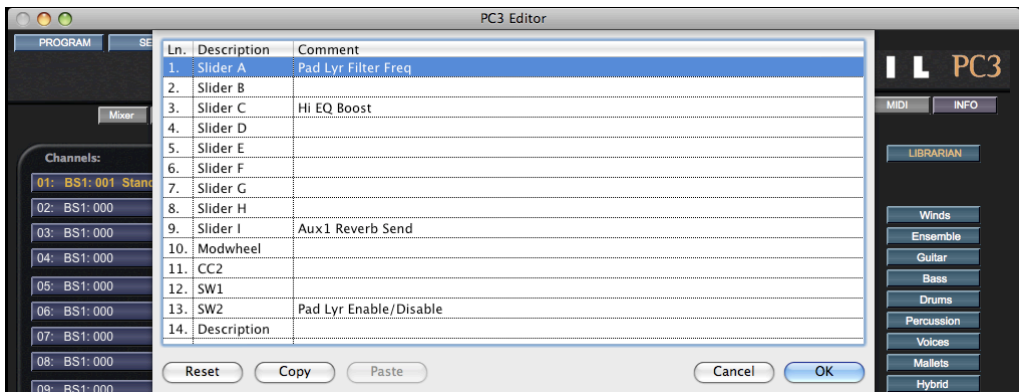
Let's first look into the features of the new INFO button.

The INFO Button

After selecting a Program by clicking on the Program name, click on the INFO button.



An INFO window will appear as shown below.



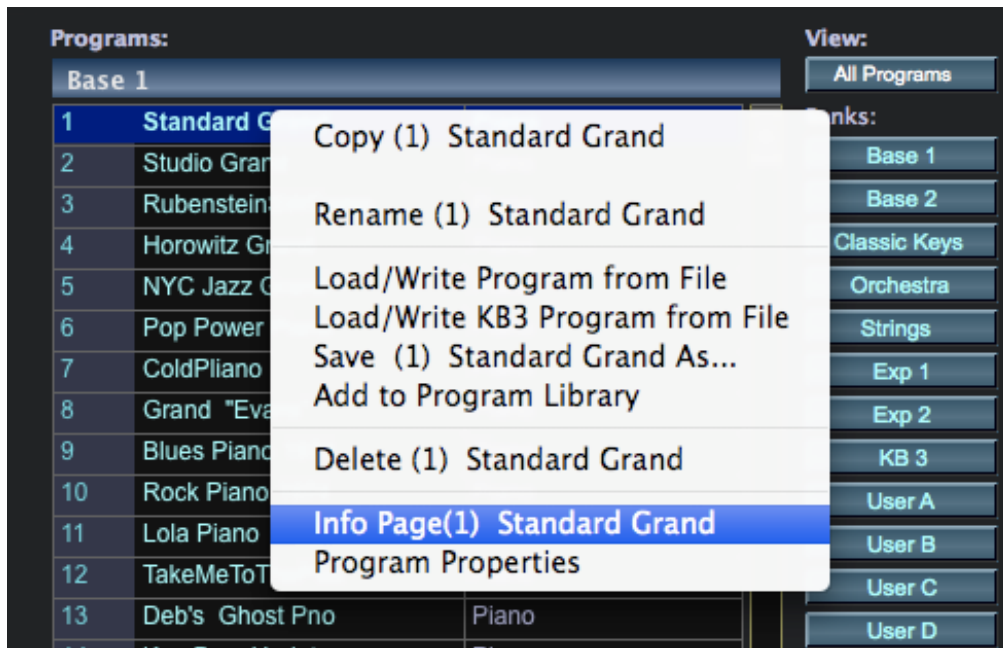
This window provides space where text may be entered to keep track of the various controller options and assignments. These notes must be entered manually.

After all the text desired to be saved with a given program is entered, clicking OK will commit these comments to the PC3 and can be viewed by clicking the INFO button on the front panel of the PC3. Please note that any text may be entered into these lines that may serve as useful cues to the performer.

Ln.	Description	Comment
3.	Slider C	Hi EQ Boost
4.	Slider D	
5.	Slider E	I can put any message I wish in this space
6.	Slider F	

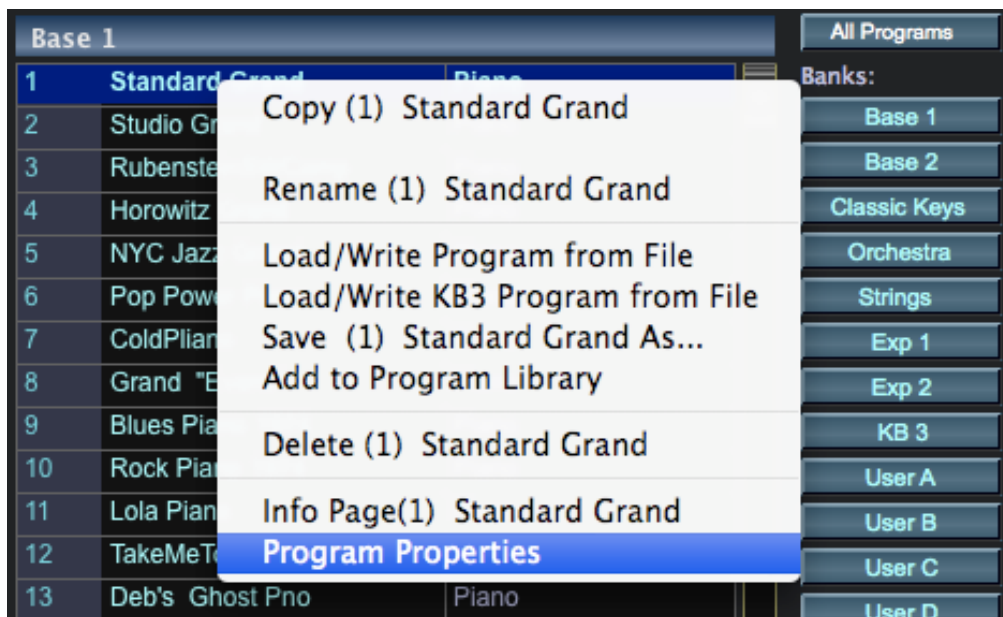
The INFO window also provide buttons for Reset to clear the entries, Copy to copy highlighted text to the clipboard, and Paste to paste text from the clipboard to the INFO window of another Program. This can be useful to copy over common controller assignments.

The INFO page can also be accessed by right clicking directly on a Program name and selection Info Page



Program Properties

You can also right click on a Program name and select Program Properties from the drop down menu.



The following window will be displayed.



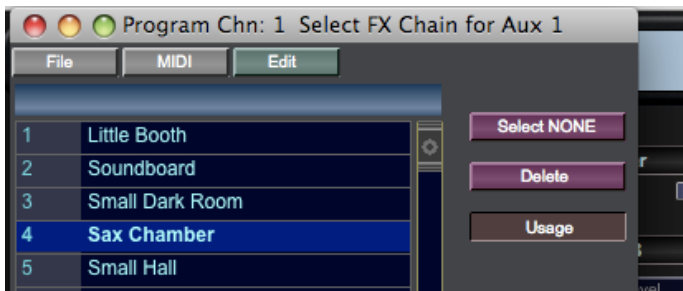
On the left side of this window you will find a listing of the various components that make up this program.

On the right side is a listing of the various Setups that the selected Program is used in. This Usage chart is to assist in assuring that a Program is not edited or deleted from a Setup that may be used.

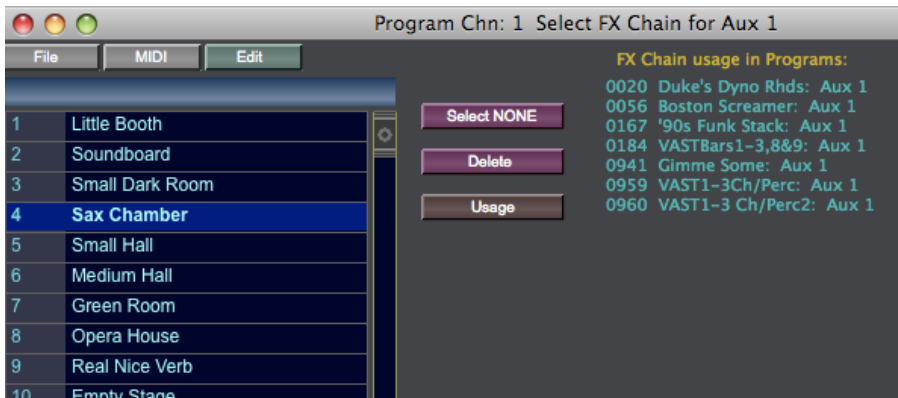
Please notice that there is an INFO button provided on this page to allow you enter text on the INFO page from this screen.

By positioning the Properties window in such a way as to not cover the list of Program names, you can click on any Program name and that Program's properties will be displayed without having to right click on the name each time. Again, this will aid in quickly viewing what Programs can be overwritten without causing problems in Setups using the Program in question.

This same feature is offered in the Effects section of the PC3 Editor. By selecting the USAGE button on the Effects preset window



You will be presented with this screen



On the right side of this window, you will see the various Programs that use the selected Effect preset. Again, this confirms usage to assist in avoiding loss of important settings. Clicking on the various Effect Preset names will update the Usage column on the right side of the window.

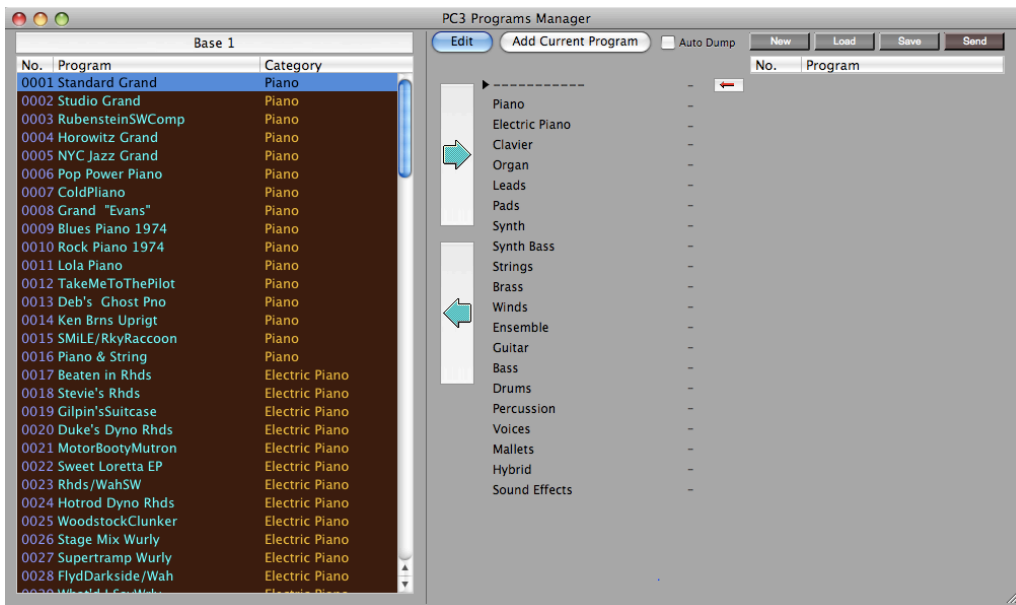
Librarian

This latest update of the PC3 SoundEditor software also includes an outstanding Librarian feature. This allows you to organize your favorite Programs into a useful order based on your needs.

Returning to the main page of the editor, click on the LIBRARIAN button

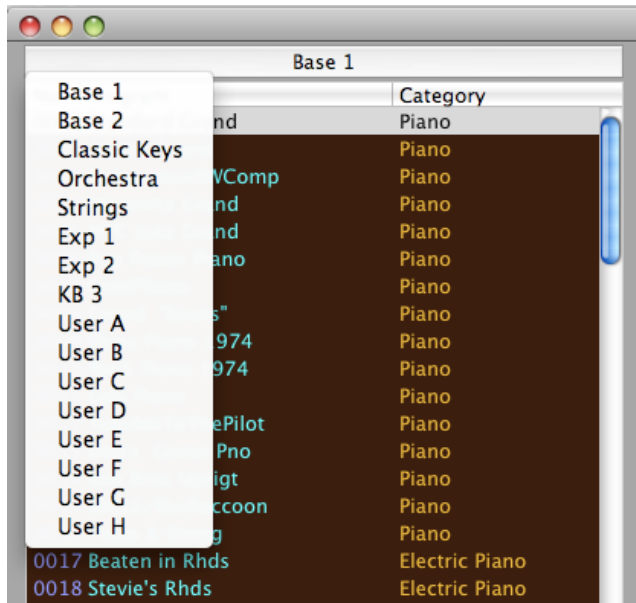


You will be presented with the following image.



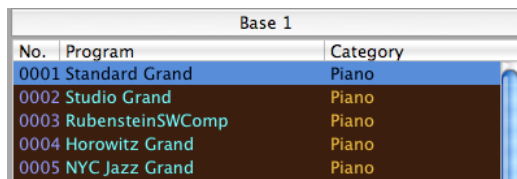
On the left you will see a list of programs of the currently selected Bank of Programs. The space to the right side of the window is where custom lists of Programs are arranged in a column to suit your needs. The Arrow buttons in the middle of the page are to send individual or multiple programs back and forth between columns.

Clicking on the top of the left column drops down a list of the available banks.



Selecting one of these banks will call up the Programs from that bank.

Single, contiguous or non-contiguous multiple Programs may be selected by highlighting the names.



Single Program are selected by simply clicking the name.



Contiguous Programs are selected by shift-clicking

Base 1		
No.	Program	Category
0001	Standard Grand	Piano
0002	Studio Grand	Piano
0003	RubensteinSWComp	Piano
0004	Horowitz Grand	Piano
0005	NYC Jazz Grand	Piano
0006	Pop Power Piano	Piano
0007	ColdPiano	Piano
0008	Grand "Evans"	Piano
0009	Blues Piano 1974	Piano
0010	Rock Piano 1974	Piano
0011	Lola Piano	Piano

Non-contiguous Programs are selected by command-clicking (Ctrl-click on PC's)

Once you have selected the Program or Programs that you wish to save to your library, you can create a new library file to save them in. Click the New button. If you wish for the Librarian to put the selected Programs in the pre set categories, just click the top right facing arrow. The Programs will drop into their matching categories. If you wish for the patches you have selected to be placed in a specific category regardless of their pre designated categories, drag the Program or Programs directly to the category name on the right side.

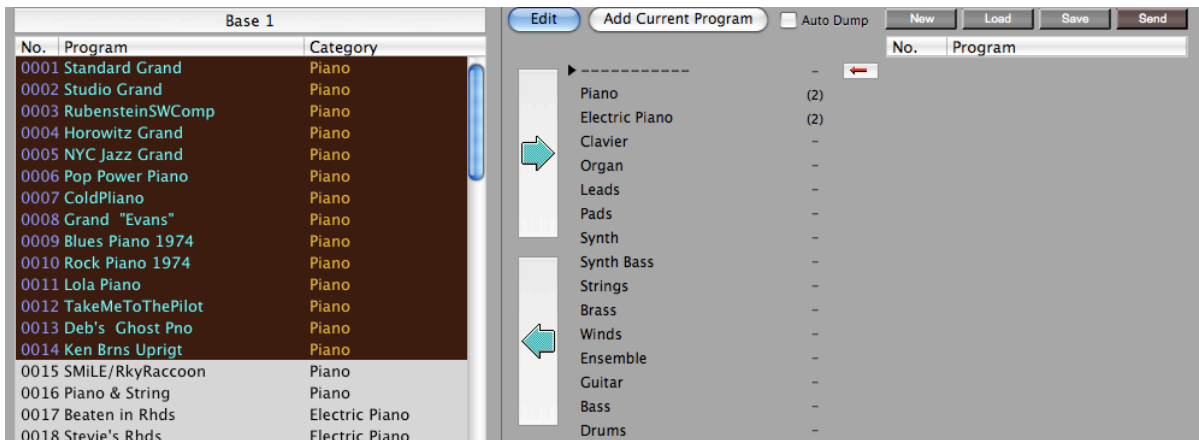
Continue this process until you have collected all the Programs you wish to save as a custom library file. Remember that you are not limited to adding Programs to your library files from a single PC3 Bank. Click at the top of the left column to select other banks that you wish to collect Programs from.

Base 1		
No.	Program	Category
0001	Standard Grand	Piano
0002	Studio Grand	Piano
0003	RubensteinSWComp	Piano
0004	Horowitz Grand	Piano
0005	NYC Jazz Grand	Piano
0006	Pop Power Piano	Piano
0007	ColdPiano	Piano
0008	Grand "Evans"	Piano
0009	Blues Piano 1974	Piano
0010	Rock Piano 1974	Piano
0011	Lola Piano	Piano
0012	TakeMeToThePilot	Piano
0013	Deb's Ghost Pno	Piano
0014	Ken Brns Uprigt	Piano
0015	SMiLE/RkyRaccoon	Piano
0016	Piano & String	Piano
0017	Beaten in Rhds	Electric Piano
0018	Stevie's Rhds	Electric Piano

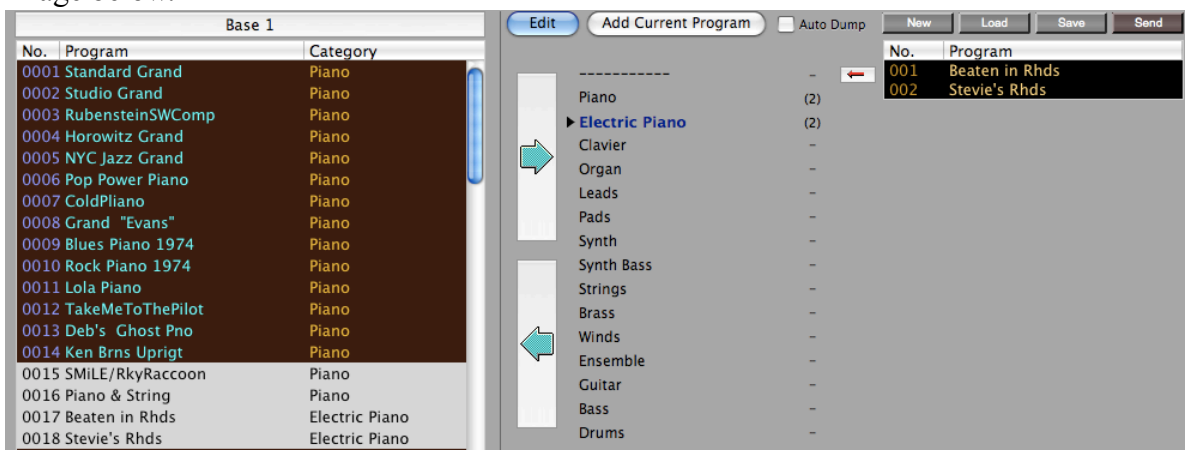
Edit		Add Current Program	Auto Dump	New	Load	Save	Send
No.	Program						
	Piano	→					
	Electric Piano	→					
	Clavier	→					
	Organ	→					
	Leads	→					
	Pads	→					
	Synth	→					
	Synth Bass	→					
	Strings	→					
	Brass	→					
	Winds	→					
	Ensemble	→					
	Guitar	→					
	Bass	→					
	Drums	→					

In this image, 4 Programs have been selected. 2 Piano and 2 Electric Piano.

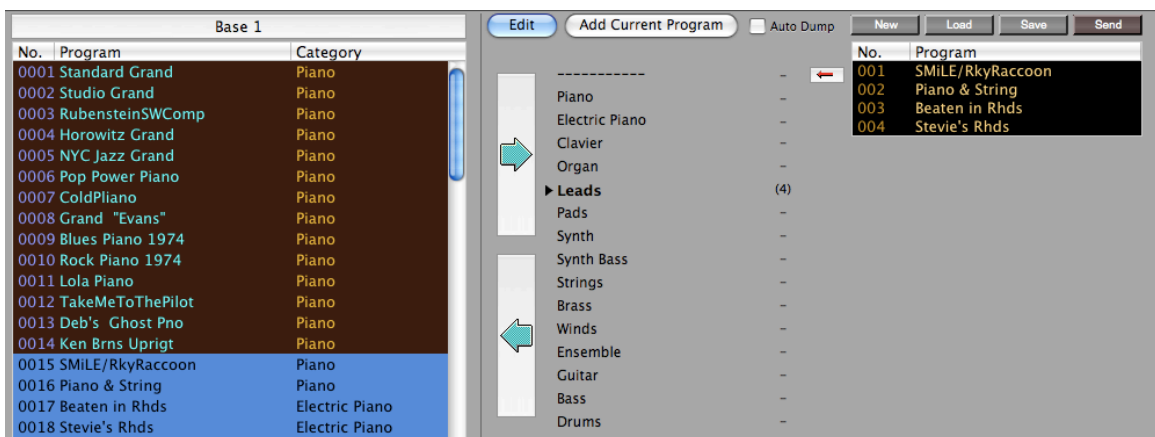
Clicking on the Right facing arrow in the center of the window will send the 4 Programs to their predetermined categories as shown as indicated in the next image.



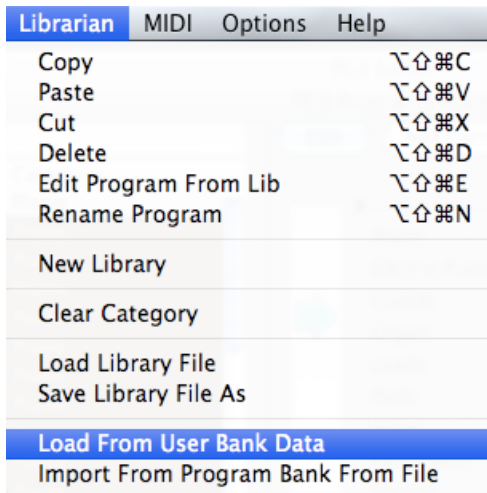
Highlighting Piano in the center column reveals the 2 Piano Programs in the right column, and highlighting Electric Piano in the center column reveals the 2 Electric Piano Programs, shown in the image below.



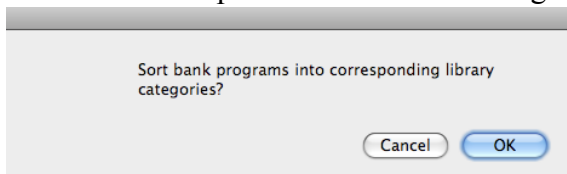
As mentioned above, you may also disregard the predesigned categories by selected any number of Programs from the left column and dragging and dropping them on to a category name in the center column as indicated in the image below.



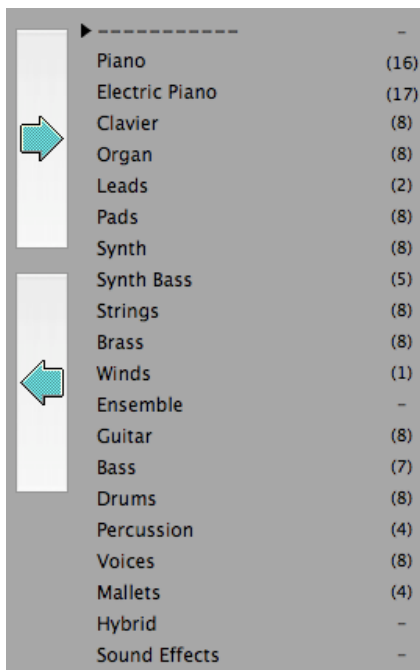
If you wish to bring an entire bank of Programs into the Librarian, select Load from User Bank Data in the Librarian menu as seen below.



You will then be presented with this dialog

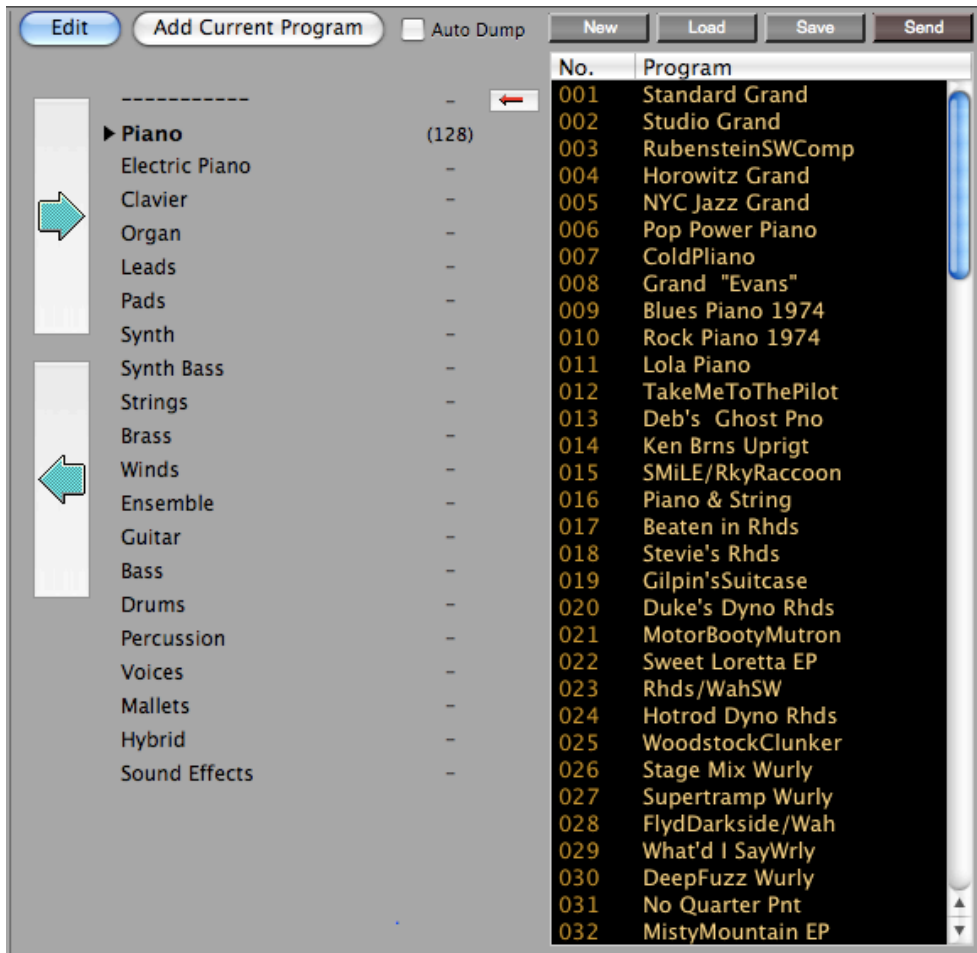


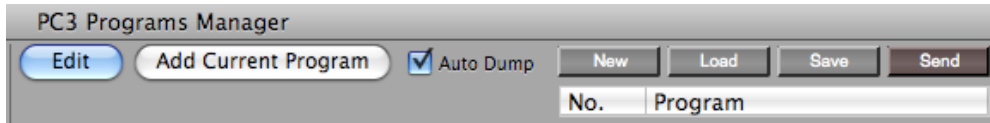
If you select OK, the entire bank of Programs will be transferred to the library file and placed in there predetermined categories.



If for some reason you wish to have all the Programs be sent to a single category, highlight that category name in the center column before selecting the load command form the librarian menu and select Cancel from the dialog box. All 128 Programs will be stored in that highlighted category.

In this example all 128 Programs were sent to the Piano category.





The following features may be found on the upper right side of the librarian window.

New - Clicking New will create a blank template to start assembling you

Programs. If you already have transferred Programs from the left columns over to right side, you will be asked if you want to save the current bank.

Save - Clicking Save will present a dialog to save out your library file.

Load - Clicking Load will present a dialog to allow you to select a previously saved library file

Send - While assembling banks of Programs, you can click on a Program to highlight it and click Send to send the Program to the PC3's edit buffer to audition the patch.

Auto Dump - Selecting this checkbox will cause the librarian to send a Program to the PC3's edit buffer to allow you to audition the sound whenever a Program is highlighted. This may be desirable under certain circumstances to avoid having to click Send every time you wish to hear a Program, but also may slow up the process of quickly assembling your library banks. This feature is offered to give you an optional way to audition your Programs.

Edit - Pushing this button brings up the editing functions to allow customizing of the current Program highlighted in the left column

Add Current Program will bring over a single Program that is currently in the edit buffer of the PC3.

This will allow you to store a Program that has been edited directly to the Librarian rather than first having to store it in the PC3.

Moving Programs Between Categories

If you wish to move Programs from one category to another, highlight the source category in the center column, select the Program or Programs from the right column and drag them over the name of the destination category.

Additionally, there is a small red arrow between the center and right columns. By selecting a Program or a number of Programs in the right column, clicking above or below the red arrow to move it beside the category name where you wish to move the selected programs to, then clicking on the red arrow, those Programs will be transferred to the adjacent category.

Transferring Programs from Library to PC3

To transfer Programs from your Library Programs, highlight a category in the center column, highlight the Program or Programs in the right column you wish to transfer, highlight a starting Program slot in the left column and click the Left facing arrow. A dialog box will appear to confirm that you wish to replace the current Programs in the PC3 with the selected Programs in the library. As an example, if you select 10 Programs in the Library, transferring to the PC3 will overwrite the highlighted Program and the next 9. Be careful with the process so as to not overwrite Programs in the PC3 that you don't wish to lose. Of course, you can always restore the PC3 to factory settings if needed. See the owners manual for details.

When working with any librarian program, it's essential to have a goal in mind. Take time to lay out a plan before you start. Save your work regularly as you go.

Menus

Bank	Librarian	MIDI	Options
Copy			⌘C
Paste			⌘V
Rename			⌘N
Delete			⌘D
Edit Program From Bank			⌘E
New Bank			
Load to Bank Base 1			⇧⌘O
Save Bank Base 1			⇧⌘S

Copy - This will copy a selected Program or number of Programs to the clipboard

Paste - This will paste the Program or Programs currently on the clipboard, To paste into a specific location, highlight a Program name and click Paste. A dialog will appear to confirm that you wish to replace the existing Programs. Clicking OK will paste the Programs into the list, starting at the highlighted Program and the following Programs below.

The Copy and Paste features can be used to effectively move Programs into a order that you may find more useful such accommodating patch changes required in a performance.

Rename - Allows you to rename a Program

Delete - This will reset a Program back to factory preset

Edit Program from Bank - the highlighted Program will be opened in the Editor for adjustments.

New Bank - No currently active

Load to Bank ... - Clicking this item will load a previously saved Bank into the currently displayed Bank. This will replace all Programs

Save Bank ... - Clicking this item will save the currently displayed Bank.

Librarian	MIDI	Options	Help
Copy			⌘⇧⌘C
Paste			⌘⇧⌘V
Cut			⌘⇧⌘X
Delete			⌘⇧⌘D
Edit Program From Lib			⌘⇧⌘E
Rename Program			⌘⇧⌘N
New Library			
Clear Category			
Load Library File			
Save Library File As			
Load From User Bank Data			
Import From Program Bank From File			

Copy - Copies highlighted Programs in the right column to the clipboard

Paste - Pastes contents of the clipboard into the right column

Cut - Cuts highlighted Programs in the right column and places them on the clipboard

Delete - Deletes highlighted Programs in the right column

Edit Program From Lib - The highlighted program is opened in the editor

Rename Program - Allows you to rename the Program

New Library - Create a new library file

Clear Category - Clear all Programs in the selected category

Load Library File - Load a previously saved library file

Save Library File As - Save the current library file

MIDI	Options	Help
Receive Bank Base 1		⌘R
Transmit Bank Base 1		⌘T
MIDI Setup		⌘M

Receive Bank ... - The currently selected Bank will be loaded into the current library file

Transmit Bank ... - The currently selected Bank will be transmitted to the PC3

Midi Setup - Configure communication between the PC3 and your computer/interface